

MAINE ARCHIVES & MUSEUMS

NEWSLETTER



View of Rapid River from the Winter House



The Summer House

“Right Buyer”
sought for
Historic Forest Lodge

by Jennie Burnette

The tour group size was just right. What began as a rainy day turned out to be a mild, cloudy day, comfortable for driving and walking around. Four vehicles trekked over 30 miles of dirt road. Our first stop was Middle Dam; Harry the dam-keeper gave us a tour and assured us that the electric company is no longer planning an entire rebuild, but will be renovating the dam.

After arriving at Forest Lodge, we were given a tour of the Riches’ Summer House and Winter House. The Friends of Forest Lodge and the owner have tried to keep both homes in the condition that Louise Dickinson Rich left them

when she picked up and moved. The houses retain most of the original furniture and decor that Louise Dickinson Rich had and used. Both homes are beautiful, and the setting could not be more pristine and serene.

After a box lunch provided by the Ladies Aid—complete with homemade sub rolls and decadent desserts—we sat around the Winter House porch and lawn listening to tales of Upton, Louise Dickinson Rich, fishing, and logging. Several guests then walked to the Chabot’s Sugar Shack, and some to see the site of lower dam and the remains of the Alligator.



Louise Davidson Rich’s typewriter

After a long but wonderful day, we all headed back to our starting place at the Upton School House, and said our goodbyes with quiet and thoughtful thank yous, thinking of another time and another world, evoked by our day’s trip.

♦♦♦♦

In September 2011, The Upton Historical Society held its first fundraising tour of Forest Lodge, home of Maine author Louise Dickinson Rich. As a fairly new historical society, we worked closely with the proprietor, building a relationship between the Friends of Forest Lodge and our society. We established

—continued on page 18



**Maine Archives and Museums
MAM Newsletter**

Volume 16 • Number 3 • August 2013
Maine Archives and Museums

www.mainemuseums.org
info@mainemuseums.org

P.O. Box 46
Cumberland Center, ME 04021
(207) 400-6965

The *Maine Archives and Museums Newsletter* is published on a quarterly basis as a benefit of membership in MAM, whose purpose is to develop and foster a network of citizens and institutions in Maine who identify, collect, interpret and/or provide access to materials relating to history and culture.

Contributions to the *MAM Newsletter* may be submitted to MAM. Contact information provided above.

To purchase copies of the *MAM Newsletter*, please contact MAM at the above address or phone number.

Third Class postage paid at Bangor, Maine.

OFFICERS

President: Jessica Skwire Routhier
Vice President: Raney Bench
Secretary: Candace Kanen
Treasurer: Ellen Dyer

BOARD MEMBERS

Jane Bianco Leigh Hallett
Heather Bilodeau Sheri Leahan
Peter Cook Teresa Myers
Rachel Desgrosseilliers David O. Smith
Gretchen Faulkner Deborah Staber
Ellen Tenan

NEWSLETTER STAFF

Editor: Jessica Skwire Routhier
and Jane Bianco
Typesetting & Design: Deborah J. McGee
Printer: Bangor Letter Shop &
Color Copy Center, Bangor

LEGAL SERVICES

Contributed by James C. Pitney
General Counsel
Preti, Flaherty, Belevau & Pachios

Advertise in the
**MAINE ARCHIVES & MUSEUMS
NEWSLETTER**

**Do you have a great product or service
that you want Maine’s museums and libraries
to know about?**

Consider a quarter-page ad in our quarterly newsletter,
which is direct-mailed to Maine’s community
of collecting organizations and published on-line.

Ads are \$100 per issue for non-members of MAM; \$75 for members.

**For complete specifications, please contact
Jessica Skwire Routhier
Newsletter Editor
jrouthier@maine.rr.com
(207) 799-7324**

TABLE OF CONTENTS

“Right Buyer” Sought for Historic Forest Lodge by <i>Jennie Burnette</i>	Cover
MAM NEWS	3
Summary of MAM Board of Trustees Actions	3
“Recharge Your Mission: Ideas to Ignite and Inspire!”	3
You Can Help MAM Plan.....	3
Bank with MAM	4
New Advocacy Resources from MAM.....	4
New MAM Membership Benefit from HistoryIT™	5
EXHIBITIONS & EVENTS.....	5
DISPATCHES	11
Old Berwick Historical Society Pioneers School/Museum Collaboration by <i>Wendy Pirsig</i>	14
Presque Isle Historical Society is “Steering Students to Local History” by <i>Kimberly R. Smith</i>	15
Abbe Museum Named Maine’s First Smithsonian Affiliate by <i>Johanna Blackman</i>	16
Maine Historical Society Partners on Week of <i>Boxer & Enterprise</i> Anniversary Events by <i>Larissa Vigue Picard</i>	16
SEEN & HEARD	17
The Little Town that Could...and Did! 20 Years Later by <i>Nancy Noble</i>	20

NEXT ISSUE: NOVEMBER 2013

**Only submissions received by the Editor by September 30, 2013,
will be considered for publication.**

Jessica Skwire Routhier
207-799-7324
jrouthier@maine.rr.com

Summary of MAM Board of Trustees Actions *April and June 2013*

The Board voted to enroll in the TD Bank Non-profit Affinity Program (*see page 4*), allowing interested parties to link their accounts to MAM in order for MAM to receive an annual donation from TD Bank.

The Board also voted to formalize a commitment to the Maine State Museum's Connecting to Collections Values Assessment project, funded by the IMLS, and to invoice MSM for the final \$2,000 of their budget, which will go towards producing Values Assessment workbooks. The workbooks, which were compiled with extensive input from MAM's members and leadership, were "beta-tested" at a MAM workshop at the L.C. Bates Museum on June 24 and will be revised and produced before year's end, closing out this phase of the grant program. MAM anticipates moving forward with an application for an implementation phase of the Values Assessment project in late 2013 or early 2014.

The following change to the by-laws was voted on and approved by the board at the June 10 meeting, in order to allow for replacement of board officers who leave in the middle of their term (there is currently no mechanism to replace any officer except the President):

Section II, Article II:

C: Vacancies

- 1) Should the office of President become vacant, the Vice President shall assume that post for the remainder of the term.
- 2) Should the offices of Vice President, Treasurer, or Secretary become vacant, the President shall appoint a replacement from among current or incoming Board members for the remainder of the term. The President's appointment shall be ratified by a consensus of the incumbent officers.

The change must be voted on by MAM's full membership at the Annual Meeting on October 29 before it takes effect.

The Board reviewed the new Advocacy resources and agreed that the website section was ready to "go live" (*see page 4*). Approval of the Advocacy Policy, however, was tabled until the next Board meeting so that everyone will have the chance to review it.



Tilar Mazzeo is the keynote speaker for MAM's Annual Conference on October 29.

“Recharge Your Mission: Ideas to Ignite and Inspire!” *Fall Conference and Annual Meeting*

Tuesday, October 29, 2013

Join us for MAM's 2013 Fall Conference and Annual Meeting on Tuesday, October 29, 2013 and re-energize! Due to the overwhelmingly positive response to last year's conference, we are pleased to return to the University of Maine, Orono, Collins Center for the Arts.

This year's theme is "Recharge Your Mission: Ideas to Ignite and Inspire!" MAM has put together a variety of inspirational sessions and practical workshops to help you rise above day-to-day challenges and generate new ideas for inspiring stakeholders, motivating volunteers and members, securing new sources of revenue and recharging your organization. Whether you are a seasoned museum professional, volunteer archivist, or the only staff member of a small historical society, the MAM 2013 conference program has something for everyone. Over 100 museum and archive professionals attended last year's conference to exchange ideas, tackle challenges, and broaden skills.

In addition, the conference will be headlined by *New York Times* bestselling author Tilar Mazzeo, professor of British and comparative literature, material culture studies, and literary and cultural theory at Colby College. Mazzeo is the author of *The Widow Clicquot* (Harper Collins, 2008), *The Secret of Chanel No. 5* (Harper Collins, 2010), and the forthcoming *The Hotel on Place Vendome: Life, Death and Betrayal at the Hotel Ritz in Paris* (Harper Collins, 2014). Describing her work as "intensely archival," Mazzeo will talk about how her books were written, some of her research adventures, and how she was inspired by the archives and material culture she encountered. Take this opportunity to learn more about how the hidden treasures in your collections can capture the imaginations of your researchers and provide the support that makes the work of authors like Mazzeo possible. And while you are at it, learn a little about the history of an iconic champagne, perfume, and hotel at the same time!

This full day of professional development opportunities will include four blocks of breakout sessions, a networking lunch, poster displays, special tours, and vendor exhibitions, covering:

- Unique collaborations
- Innovative fundraising
- Compelling educational programming
- Savvy media planning
- Effective grant writing
- Interactive values assessments
- Successful internship programs
- and more!

Watch your mail and email for conference registration sign-up. Additional information will also be available via Facebook and MAM's website at www.mainemuseums.org. Questions? Email: info@mainemuseums.org or phone (207) 400-6965.

You Can Help MAM Plan

*Join MAM at a Long-Range Planning Retreat
on September 9!*

MAM is now in the final year of its 2009-2013 Long-Range Plan and is actively working on a new plan to go into effect in 2014. For over a year, MAM has been collecting feedback from its membership and other affiliated organizations and individuals through meetings, surveys, and informal feedback. The Long-Range Planning Committee is compiling this information and will bring it all together at a day-long retreat planned for **Monday, September 9, from 9:30 a.m. to 3:30 p.m. at the Newport Cultural Center**. If you are interested in participating and in helping to plan for the future of collecting institutions in Maine, please

continued on page 4

Maine Archives & Museums 2013 BOARD OF DIRECTORS

President:

Jessica Skwire Routhier (2009)
Independent Museum Professional
48 Bellevue Avenue
South Portland, ME 04106
Phone: 207-799-7324
jrouthier@maine.rr.com

Vice President:

Raney Bench (2012)
Abbe Museum
26 Mount Desert St.
Bar Harbor, ME 04609
Phone: 207-288-3519
educator@abbemuseum.org

Secretary:

Candace Kanés (2011)
Curator/Historian, Maine Memory Network
Maine Historical Society
489 Congress St.
Portland, ME 04101
Phone: 207-774-1822
ckanes@mainehistory.org

Treasurer:

Ellen Dyer (2013)
Museum Consultant
81 Bobolink Lane
Thomaston, ME 04861
Phone: 207-226-3434
ellendyer@roadrunner.com

BOARD MEMBERS

Jane Bianco (2010)
Farnsworth Art Museum
16 Museum Street
Rockland, ME 04841
Phone: 207-596-6457 x104
jbianco@farnsworthmuseum.org

Heather Bilodeau (2012)
Walsh History Center, Camden
Public Library
55 Main Street
Camden, ME 04843
Phone: 207-236-3440
hbilodeau@librarycamden.org

Peter Cook (2012)
Tare Shirt Farm
227 Diamond Hill Road
Berwick, ME 03901
Phone: 207-698-1664
Cell: 207-43-4445
pwcooktsf@aol.com

Rachel Desgrosseilliers (2012)
Museum L-A
35 Canal Street Box A7
Lewiston, ME 04240
Phone: 207-333-3881
rachel@museumla.com

Gretchen Faulkner (2013)
Hudson Museum
5746 Collins Center for the Arts
University of Maine
Orono, ME 04469-5746
Phone: 207-581-7904
gretchen@umit.maine.edu

Leigh Hallett (2011)
Newport Cultural Center
154 Main Street
Newport, ME 04953
Phone: 207-368-2193
director@newportculturalcenter.org

Sheri Leahan (2011)
Independent Museum Professional
35 Cummings Hill Road
Temple, ME 04984
Phone: 207-779-4445
sleahan@gmail.com

Teresa Myers (2012)
Myers Conservation Services
26 Frandy Lane
Sebec, ME 04481
Phone: 207-564-3910
Info@MyersConservation.com

David O. Smith (2013)
Kennebec Valley Community
College Archives
92 Western Avenue
Fairfield, ME 04937-1367
Phone: 207-453-5004
LibraryArchive@kvcc.me.edu

Deborah Staber (2012)
L C Bates Museum
P.O. Box 159
Hinkley, ME 04944
Phone: 207-238-4250
lcbates@gwh.org

Ellen Tenan (2012)
Ruggles House
298 Tenan Lane
Cherryfield, ME 04622
Phone: 207-546-7903
etenan@ruggleshouse.org

(In parentheses after each name is the year the director began serving his/her term. A director can serve up to three successive two-year terms.)

You Can Help MAM Plan, *continued from page 3*

contact MAM's director Erin Bishop at info@mainemuseums.org or (207) 400-6965.

Bank with MAM!

MAM is pleased to announce that it has recently joined the Affinity Membership Program at TD Bank. Through this program, MAM's members and supporters can raise money for MAM by "linking" their personal or business accounts at TD Bank to MAM. This is a great, zero-cost way to support MAM and all it does for Maine's cultural institutions. Why not make it a priority to link your existing TD Bank accounts to MAM this summer? Here's how it works:

- Simply go to your local branch of TD Bank and tell them that you would like to participate in the Affinity Membership Program, with Maine Archives and Museums designated as the beneficiary.
- If you are opening a new checking account and link it to MAM, TD Bank will donate \$50 to MAM.
- For each existing checking account you link to MAM, TD Bank will donate \$10 to MAM on an annual basis.
- TD Bank will donate 1/10 of 1% of the annual average balances of any savings accounts linked to MAM.

Eligible accounts for the program include business checking, consumer

checking, consumer savings, consumer money markets, consumer CDs and consumer retirement accounts. For more about TD Bank's non-profit Affinity Membership Program, call 888-751-9000. Remember: this way to give is FREE to you, but it could make a meaningful difference for collecting institutions throughout Maine! Please contact MAM with any questions: info@mainemuseums.org or (207) 400-6965.

New Advocacy Resources from MAM

Maine Archives and Museums is proud to introduce a new section on its website dedicated to Advocacy. "Advocacy is," as explained on the site, "active support for a cause—your museum, archive, library, historical society, or historic property." Whether it's a sit-down meeting with a legislator, a social media post about a local issue, or just an open house day for the community, cultural organizations have the right to let people know about the good work they do. And MAM is pleased and proud to support those efforts with its new site: www.mainemuseums.org/Advocacy.

"These new resources on our website will help MAM's members—and other cultural organizations in Maine—discover new ways to talk about why the work they do is important," said MAM Director Erin I. Bishop, Ph.D. "It is one-stop shopping for a lot of great ideas and tools to expand the conversation and foster new and stronger relationships

—continued on page 5

EXHIBITIONS & EVENTS



*Civil War Needlework
of Lady Liberty,
circa 1860s*

Folk Art Inspired by the Civil War

Exhibition at the Rufus Porter Museum, Bridgton
On view now through October 1, 2013

The focus of the Rufus Porter Museum's 2013 special exhibit is patriotic folk art. It includes eagles, whirligigs, weathervanes, crocks, and other patriotic objects used in everyday activities. Featured is a James Bard painting of a steamship used to carry troops during the Civil War and a gilded weathervane of Lady Liberty holding the flag up high. Early 19th-century Chinese export porcelain with eagle decorations, ordered by patriotic American families after the Revolution and the War of 1812, will also be on display. This season the Rufus Porter Museum joins 22 other Maine museums and historical societies across the state in a Civil War Trail. FMI: (207) 647-2828/ rufusportermuseum@myfairpoint.net/ www.rufusportermuseum.org.

Thursday Night Lecture Series at the Penobscot Marine Museum

At PMM's Stephen Phillips Memorial Library, 11 Church Street, Searsport. Tickets in advance \$8 members, \$10 non-members, or at the door \$12 members, \$15 non-members. Buy tickets online at <http://captcharlesweeks.eventbrite.com> or call (207) 548-2529.

Thursday, August 1, 7 p.m.: "Titanic: What Really Happened" with Maine Maritime Academy professor Captain Charles Weeks

Thursday, August 8, 7 p.m.: University of Maine marine archaeologist Warren Riess will speak about his new discoveries and his exciting work as a national expert in marine archaeology of the New England and mid-Atlantic regions.

Thursday, August 15, 7 p.m.: Tim Garrod, a Searsport native and US Naval War College professor, tells hair-raising stories of rescues at sea.

Thursday, August 22, 7 p.m.: Author and former *Downeast* editor Andrew Vietze talks about his book *Boon Island: A True Story of Mutiny, Shipwreck, and Cannibalism*.

Thursday, August 29, 7 p.m.: Talk and book signing with Mark J. Gabrielson, author of *Deer Isle's Undeclared America's Cup Crews: Humble Heroes From a Downeast Island*.

Thursday, September 12, 7 p.m.: "Historic Antarctic Exploration—Shackleton, Scott and Amundsen" with Buzz Scott, founder of OceansWide.

Annual Blueberry Pancake Breakfast Presented by the Franklin Historical Society

Saturday, August 3, 7 to 10 a.m.
At the Franklin Veterans Hall, Route 182. Tickets: Adults: \$5; Children: \$2.50. Free books for young kids in support of summer reading! FMI: diane04634@hotmail.com or find the Franklin Historical Society on Facebook.

Fashion Design Workshop with LEON

*Workshop at the
Abbe Museum, Bar Harbor
Saturday, August 3,
9 a.m. to 1 p.m.*
Passamaquoddy fashion designer LEON will present on his use of historical and cultural fashions along with modern styles to create contemporary fashions that reflect his own unique style. Clothing is one of the more defining aspects of culture. Fashion can represent a culture's history, influences, and aesthetics in ways that few other mediums can. Those in attendance will learn to look at fashion as a valuable insight to the worlds of history and culture, and will be encouraged to create their own designs that reflect both their ancestral history and individual style. Attendees will learn basic techniques in drawing for Fashion Design. This workshop is made possible thanks to support from the Smithsonian Community Grant program, funded by MetLife Foundation and by the Maine Community Foundation. This workshop is free, but space is limited, so contact Museum Educator George Neptune to make reservations, (207) 288-3519, ext 31 or email george@abbemuseum.org. FMI: www.abbemuseum.org.



Annual Open House and Exhibit Day at the Jefferson Historical Society

Saturday, August 3, 10 a.m. to 2 p.m.
This is a great opportunity for the public to see the newly restored second floor of the 1869-built Old Jefferson Town House. Part of the second floor
—continued on page 6

You Can Help MAM Plan, *continued from page 4*

with decision-makers at the national, state, and local level."

The website includes definitions of advocacy and how it differs from lobbying; ideas for low-effort, no-cost monthly advocacy projects; tools for identifying and contacting legislators, writing economic impact statements and advocacy policies, getting training, contacting the press, and signing up for legislative alerts; a list of annual advocacy events for museums and libraries; and much more. MAM is also working on an Advocacy Policy, which will be formalized in time for a special session on advocacy at MAM's Annual Meeting and Conference on Tuesday, October 29, at the Collins Center for the Arts at the University of Maine, Orono. For more information on MAM's conference, see above or visit www.mainemuseums.org/Conference2013.

In deepening its commitment to advocacy issues, a central part of its mission, MAM joins its efforts to those of national organizations like the Institute for Museum and

Library Services, the American Alliance of Museums, the American Library Association, and the Society of American Archivists, which in recent years have spearheaded initiatives such as National Museum Advocacy Day and Library Snapshot Day, among others. Regional and state advocacy efforts are also supported by organizations such as the New England Museum Association, New England Archivists, the Maine State Library, and the Maine Library Association. Please take a look at the new site and let MAM know what you think! We would love your feedback.

New MAM Membership Benefit from HistoryIT™!

Effective immediately, MAM members will receive \$100 off of the annual fee for HistoryIT's digital collections management software, ArchivesTree™. The discount is

available for both new and renewing subscriptions (regardless of the package level) every year that your MAM membership continues. This benefit has been arranged in cooperation with HistoryIT, a Portland-based full-service information technology firm that specializes in the review, preservation, digitization, presentation, and electronic management of historical collections. HistoryIT is also the lead sponsor for MAM's annual conference this year (see p. 3). Learn more about HistoryIT at www.historyit.com, or visit their booth at the conference. To receive the MAM discount, sign up for ArchivesTree at <http://www.archivistree.com/purchase.html> and indicate "MAM" in the Membership Affiliation field.

REMEMBER: MAM offers an array of discounts to its members! To find out more and to get discount codes, please visit the Member Discounts page on the Members Only section of our website. Note that you MUST be logged in with your e-mail address and password in order to see this page! •

EXHIBITIONS & EVENTS

continued from page 5

held the selectmen's office, with the remaining large space for town meeting suppers and meeting places for various organizations such as the GAR, 4-H and other groups. The building also served briefly as a high school. Eventually, large permanent displays will be set up in the space. The main floor was recently restored with the original benches and selectmen's section still intact. Displays will be in the basement meeting space and on the first floor. An ice-cream social will cool off visitors, and a lobster/crabmeat/hot dog luncheon will be available. At the Old Jefferson Town House, 7 Gardiner Road. FMI: (207) 549-5258.



Deer Isle Boat Show

Event at Deer Isle-Stonington Historical Society Sunday, August 4, 2013 from 10 a.m. to 1 p.m.

Come explore the island's maritime heritage through a variety of local watercraft on display, children's activities, exhibits, and boat models. The show will take place on the waterfront in scenic downtown Stonington. Over 15 classic and contemporary boats will be displayed in the water and on land. Visitors will be able to meet and speak with boat builders and owners, and it will be possible to board many of the larger boats for an up-close look. An indoor exhibit will feature boat models and half hulls. FMI: visit www.deerisleboatshow.com or contact Wesley Norton at 207-650-5944 or wnorton@islandinstitute.org.

Historic New England 2013 Wiscasset Lecture Series

All lectures take place at the Nickels-Sortwell Barn, Federal Street, Wiscasset from 3 to 4:30 p.m. Admission is \$5 for Historic New England members, \$10 for nonmembers. Registration is recommended. Please call 207-882-7169 for more information.



Ellis Spear
Courtesy of
Tom Desjardins

Sunday, August 4: "Ellis Spear: Wiscasset School Teacher in the Twentieth Maine" with Dr. Tom Desjardins, historian for the Maine Department of Conservation

Sunday, September 15: "Mildred G. Burrage, Painter and Preservationist" with Earle Shettleworth, director of the Maine Historic Preservation Commission and Maine State Historian



Mildred Burrage, *A November Day*, Brittany, courtesy Portland Museum of Art

Garden History Lecture Series at the Penobscot Marine Museum

At PMM's Stephen Phillips Memorial Library, 11 Church Street, Searsport. Tickets in advance \$8 members, \$10 non-members, or at the door \$12 members, \$15 non-members. Buy tickets online at <http://garden03.eventbrite.com> or call (207) 548-2529.

Monday, August 5, 7 p.m.: "Colonial Herbs for meate and medicine, and Shaker Influence," an illustrated talk with Diana Chapin

Monday, September 9, 7 p.m.: "Seed Saving Primer, and Genetic Engineering and Food Security" with Diana Chapin

The Crowhurst Murder

Lecture at the Gouldsboro Historical Society
Monday, August 5, 7 p.m.

The Reverend Charles A. Joy will enthral us with details of the Crowhurst murder, which took place in the building located across the street from the Museum when that building was a road-side eatery. At the Old Town House Museum, 452 U.S. Route 1, Gouldsboro. FMI: (207) 963-5530.

"The Boxer and the Enterprise: Maine's Own Sea Fight of the War of 1812"

Lecture at Colonial Pemaquid State Historic Site
Monday, August 5, 7:30 p.m.

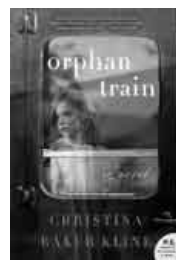
On Sunday, September 5, 1813 the HMS Boxer, a two-masted, square rigged ship was off Pemaquid Point when she spotted a sail. It was the USS Enterprise. For about three quarters of an hour, the two ships engaged. Hundreds of spectators on shore watched as the two ships battled at close range. James Nelson, historical author and Education Coordinator for the Maine Maritime Museum, will relate the interesting details of this local Maine naval battle. Sponsored by the Friends of Colonial Pemaquid, this program will take place at The Contented Sole Restaurant, adjacent to the museum. Admission is \$5, and free for members. Membership applications will be available. FMI: www.FriendsofColonialPemaquid.org / (207) 677-2423.

The Making of Orphan Train: Researching and Writing about Cross-Cultural Connection and Resilience with best-selling author Christina Baker-Kline

Lecture at the Abbe Museum, Bar Harbor
Monday, August 5, 7 to 8:30 p.m.

Author Christina Baker-Kline will discuss the making of her bestselling novel *Orphan Train*, focused on her research for the character of

Molly and the history of the Penobscot people and the history of orphan trains. The power of human resilience and unexpected friendship are at the heart of this novel. Kline seamlessly blends contemporary and historical storylines, while alternating between present-day Mount Desert Island, Maine, where we meet 17-year-old foster child and Penobscot Indian Molly Ayer, and 91-year-old Irish immigrant Vivian Daly, and Minnesota in the early 20th century, where we learn about Vivian's past. When Molly needs to complete community service hours, she agrees to help Vivian clean out her attic. As boxes are unpacked, Vivian finds the courage to confront her past, and the two discover they have much more in common than they ever would have imagined. Free and open to the public. FMI: www.abbemuseum.org.



PEJEPSCOT HISTORICAL SOCIETY PRESENTS

Chamberlain Days

August 9-11, 2013

COMMEMORATING THE
150TH ANNIVERSARY OF
THE BATTLE OF GETTYSBURG



www.pejepscothistorical.org



Chamberlain Days

Festival hosted by
Pejepscot Historical Society, Brunswick
Friday, August 9 through
Sunday, August 11

Pejepscot Historical Society in Brunswick continues its Civil War Sesquicentennial year with *Chamberlain Days*, August 9-11. Registration is now open for full weekend packages; guests are also welcome to pick and choose their events. Encampment by Civil War reenactors on Brunswick's downtown mall, walking tours, presentations, auction of Chamberlain art and artifacts, Downeast reception. PHS's two house museums, the Joshua L. Chamberlain Museum and the Skolfield-Whittier House, are open through Columbus Day. Also open and free of charge is PHS's Civil War Sesquicentennial exhibit, *Brunswick and the Civil War*. See www.pejepscothistorical.org for details.

Annual Wine & Cheese Social

Event at the
Readfield Historical Society
Friday, August 9, 5-7 p.m.

A variety of finger foods, as well as wine and non-alcoholic beverages, will be available. Members are free, while new memberships will be welcomed at the door for \$10. Come and see our schoolroom and museum while munching goodies in a relaxed atmosphere among likeminded people. The Readfield Historical Society is located at 759 Main Street in Readfield Depot. FMI: (207) 685-4662 / www.readfieldhistorical.org.

—continued on page 7

EXHIBITIONS & EVENTS

continued from page 6

Friendly Garden Visits

Garden Tours sponsored by the Friendship Museum

Saturday, August 10, 10 a.m. to 2 p.m.

Self-guided walking tour of 15 historic and contemporary gardens along Harbor Road, Friendship. Registration and maps at Friendship Museum Annex, 30 Main St., Friendship. Refreshments, raffle and garden bazaar starting at 2 p.m. at the Annex. FMI: Liga Jahnke, (207) 832-6646 / www.friendshipmuseum.org.



“Using Old Cemeteries to Teach History”

Program at the Hiram Historical Society

Saturday, August 10, 1:30 p.m.

Back by popular demand, this program will be led by creative elementary school teacher and cemetery restorationist Jessica Felix and will be followed by a hands-on workshop in the Village Cemetery on realigning gravestones. Under Felix's direction, students learn about art, design, science, engineering, materials, and preservation as well as history, culture, families, and architecture of family homes. Hiram Historical Society programs are held at the Great Ossipee Museum, 20 Historical Ridge (off Schoolhouse Rd., off Rte. 117) in Hiram Village. Business meeting 1 p.m., program 1:30. Free and open to the public. Light refreshments. FMI: (207) 625-4762.



Canoe Building Project

Ongoing Demonstration at the Abbe Museum, Bar Harbor

Monday through Friday,

August 12 through September 6,
10 a.m. to 5 p.m. daily

For the first time in almost 100 years, a birchbark canoe will be built on Mount Desert Island! Master canoe builders David Moses Bridges, Passamaquoddy, and Steve Cayard will spend almost a month at the Abbe building a 16-foot traditional bark canoe, joined by Passamaquoddy apprentice Tobias Gabriel Francis. Visitors to the Abbe will be able to watch the process of building the frame, shaping the bark, bending and placing the ribs, and lashing it all together with roots from the spruce tree. Using primarily hand tools, the canoe will be made almost entirely of traditionally available materials and etched with traditional Passamaquoddy designs (See more at: <http://www.abbemuseum.org/calendar/august.html#sthash.s5Kd2s6R.dpuf>.)

Building birchbark canoes is a skill that was nearly lost in Maine. For over a decade, David and Steve have worked together to revitalize this art form, and have taught others in Wabanaki communities how to make the boats as well. Visitors will be able to ask questions about the tradition of canoe making in Maine, the process of revitalizing this skill, how the materials were gathered and prepared, and learn more about the important role these boats play in Wabanaki history and identity. This program, made possible by a gift from Donna and David Reis, is offered in connection with *Wabanaki Guides*, an exhibit that chronicles the history of guiding visitors to Maine from the time of European contact to present, and features two birchbark canoes. Free with museum admission. FMI: www.abbemuseum.org.

“The Cilleys and the Civil War”

Lecture at the Thomaston Historical Society

Tuesday, August 13, 7:30 p.m.

Author and historian Eve Anderson will talk about the service during the Civil War of the two sons of Congressman Jonathan Cilley. The Society is located at 80 Knox Street, Thomaston. FMI: (207) 354-2295 / www.thomastonhistorical.society.com.

“Tales from the Maine Woods & Streams”

Program at the Franklin Historical Society

Wednesday, August 14, 7 p.m.

At the Society Building, Route 200, Hog Bay Rd., Franklin. With Charlie Marshall, Maine Game Warden, Ret. FMI: diane04634@hotmail.com or find the Franklin Historical Society on Facebook.

Artist Talk with Loretta Krupinski

Program sponsored by the Friendship Museum

Wednesday, August 14, 7 p.m.

Talk by artist and garden author Loretta Krupinski from St. George. Hahn Community Center, 31 Main St., Friendship. FMI: Liga Jahnke, (207) 832-6646 / www.friendshipmuseum.org.

Civil War Film Festival:

The Conspirator

Screening at the

Dyer Library and Saco Museum, Saco

Thursday, August 15 at 8 p.m.

on the Saco Museum Grounds

(rain location: Dyer Library Deering Room)

Bring your favorite blanket and snacks and join us for 2010's *The Conspirator*, starring James McAvoy, Tom Wilkinson, and Robin Wright. This film follows the assassination of President Abraham Lincoln and the attempts on other members of Congress. Mary Surratt is charged as a conspirator against Lincoln and the only woman accused in the group. As the whole nation turns against her, she is forced to rely on her reluctant lawyer to uncover the truth and save her life. Directed by Robert Redford, rated PG-13, 122 minutes. FMI: (207) 283-3861 / www.dyerlibrarysacomuseum.org.



Stitches in Time— Needlework at Castle Tucker

Program at Castle Tucker, Wiscasset
Fridays, August 16 and September 27,
10 a.m. to 11:30 am

Join quilter and museum guide Betsy Spekke for a special tour highlighting quilts, embroidery, crochet work and other examples of needlework at Castle Tucker. The program will begin with a brief overview of Victorian handwork then view examples and sewing notions from the Tucker collection, including rooms not shown on the regular tour. The tour will close with an introduction to examples of needlework in the Historic New England online collections database. Castle Tucker is located at 2 Lee Street, Wiscasset. Admission: \$10 for Historic New England members, \$15 for nonmembers. Registration is required. Space is limited. FMI: 207-882-7169 / www.historicnewengland.org.



Storytelling by the Sea Festival

Hosted by the Wilson Museum, Castine

Friday, August 16 through Sunday, August 18;
kicks off August 16 at 1 p.m.

Like a drum major leading an exuberant parade, Maine humorist Tim Sample will kick off the *Storytelling by the Sea* festival on Friday afternoon, August 16, at 1 p.m. on the picturesque grounds of the Wilson Museum on the shore of Castine Harbor. *Storytelling by the Sea* festival is the culmination of a year-long storytelling series entitled *Storytelling Can Change Your Life* sponsored by many Castine community organizations and several granting agencies. Storyteller Jennifer Armstrong will act as MC throughout the three-day festival as well as telling a tale or two herself. Other storytellers will include John MacDonald, Frank Gotwals, Oscar Mokeme, and many more. FMI: (207) 326-9247, www.wilsonmuseum.org/calendar/html.

THE BIG EVENT

Collaboration between
the Bridgton Historical Society and
the Rufus Porter Museum
at Bridgton Academy

Friday, August 16, 5:30 p.m.

THE BIG EVENT is the second annual joint fundraiser between the Bridgton Historical Society and the Rufus Porter Museum. Join us for an

—continued on page 8

continued from page 7

evening of live music, a lasagna dinner, and a silent auction. Musical entertainment will be provided by the ever-popular Skylarks. Tickets cost \$25. Please check our websites for more information on auction items. FMI: Contact the Bridgton Historical Society at (207) 647-3699 or at info@bridgtonhistory.org or the Rufus Porter Museum at (207) 647-2828 or at rufusportermuseum@myfairpoint.net.



President of the Board Judith Graham holds up a painted box for auction at last year's Big Event fundraiser.

Jefferson Day

Community event featuring
the Jefferson Historical Society

Saturday, August 17, 9 a.m. to 2:30 p.m.

The annual Jefferson Day will feature road races, a parade, antique cars, booths, crafts, and games. The Jefferson Historical Society will have a booth featuring a Choose-Your-Own Cookies sale and Jefferson memorabilia. Activities will be in the Jefferson School and on the Town Green near the Town Office. FMI: (207) 549-5258.

Upton Fun Day

Parade and Activities at
the Upton Historical Society

Sunday, August 18, beginning at 9 a.m.

The parade begins at 9 a.m., with a theme of Old Time Farming. Following the parade, there are a variety of events and exhibits from the Upton Historical Society and Upton Ladies Aid. Please join us for this fun-filled family day, in supporting our historical society. The society is located at 367 Back Street, Upton. FMI: e-mail upthonhistorical@gmail.com

Third Annual Picnic in the Park

Hosted by the Franklin Historical Society
Sunday, August 18, 11 a.m. to 3 p.m.

At the Memorial Park, Route 182, Franklin. Hot dogs, drinks, blueberry cake, whoopie pies, and more. Craft and garden booths, games, activities. Free books for young kids in support of summer reading. Come out for some old-fashioned family fun!! FMI: diane04634@hotmail.com or find the Franklin Historical Society on Facebook.

"For the Entertainment of Friends and Strangers: The Tavern and Inn in Colonial New England, 1635-1750"

Lecture at Colonial Pemaquid State Historic Site
Monday, August 19, 7:30 p.m.

Join Dr. Neill De Paoli at Colonial Pemaquid as he sheds light on the tavern and inn in Colonial New England life. Taverns were not only an integral part of colonial life in America, but



were also a necessity. By 1680 Boston had six "wine taverns," ten inns, and eight retailers of alcoholic beverages. In this evening presentation, Dr. DePaoli will explore the rapid emergence of the tavern and inn in early Massachusetts and Maine as not only a place of relaxation and entertainment, but of news, public debate, town meetings, and business. The audience will "visit" a host of historic and archaeological sites ranging from the Three Cranes Tavern in Charlestown, Massachusetts (1635-1775) and the Green Dragon Tavern (est. 1680) in Boston to the more remote environs of the Wellfleet Tavern (c. 1690-1740) on Cape Cod and John Earthy's (est. c. 1674) tavern in Pemaquid, Maine. The program will end with a sampling of 17th- and 18th-century tavern fare. This presentation is the last of the season's popular lecture series sponsored by the Friends of Colonial Pemaquid. Neill De Paoli's lecture will take place in the Contented Sole Restaurant adjacent to the museum. Admission is \$5, and free for members. Membership applications will be available at the lecture. FMI: www.FriendsOfColonialPemaquid.org / (207) 677-2423.



Mollie Tucker
c. 1860,
courtesy of
Historic New
England

Mrs. Tucker's Supper - A Culinary Journey

Program at Castle Tucker, Wiscasset
Thursday, August 22, 10 to 11:30 a.m.

In April 1860, nineteen-year old Mollie Tucker wrote a letter to her sister about a special meal that she had recently prepared. "We had a grand supper for the gentlemen the other night...and everyone is talking about Mrs. Tucker's supper," she said. Who were these gentlemen and what was the occasion? Was her menu typical for the time? How was the meal prepared, where and how was it served? Join guide Cathy Messmer on this journey back to that special evening in the spring of 1860. The program includes a tour of the house. Castle Tucker is located at 2 Lee Street, Wiscasset. Admission: \$10 for Historic New England members, \$15 for nonmembers. Registration is required. Space is limited. FMI: 207-882-7169 / www.historicnewengland.org.



Rachel Desgrosseilliers, Executive Director of Museum L-A as "Rachel," the host of "Rachel's Speakeasy." With her is a member of her entourage (Gabrielle Russell).

"Rachel's Speakeasy"

Den of Iniquity at Museum L-A, Lewiston
Thursdays, August 22, September 12, and
October 17, 6 to 10 p.m.

Guests whisper a secret password to gain entry to "Rachel's Speakeasy"—when Museum L-A in Lewiston transforms itself once a month into a 1920s-era nightclub. "Rachel" (Executive Director Rachel Desgrosseilliers) and her "entourage" host an evening of Prohibition-era libations, dancing, and live jazz amid flapper dresses, fedoras, and pin-striped suits. Speakeasy nights are being held in conjunction with "The Roaring 20s to Swing," Museum L-A's latest exhibition in its three-year "Power of Music" series. FMI: <http://museumla.org/rachels-speakeasy>.



An early nineteenth-century chair at the Rufus Porter Museum.

Furniture Detectives

Program at the Rufus Porter Museum, Bridgton
Wednesday, August 28, 1 to 3 p.m.

Have you always wondered how old Grandma's chair is? Do you want to know how to date wooden furniture and objects? Come to this informative session led by connoisseur Tom Johnson to learn about historic furniture and bring one piece from home to discuss with the group in hopes of discovering the truth behind it! \$10 fee includes museum admission and object assessment. 67 North High Street, Bridgton. FMI: (207) 647-2828 / rufusportermuseum@myfairpoint.net / www.rufusportermuseum.org

Ahmed Alsoudani: Redacted

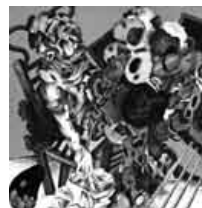
Exhibition at the Portland Museum of Art
On view September 7 through December 8, 2013
Ahmed Alsoudani: Redacted will showcase recent work by the celebrated New York-based Iraqi artist and will include a number of new paintings and drawings that continue to chart the artist's unique and powerful visual vocabulary of violence, survival, and history. Alsoudani's artistic process involves layering charcoal drawing and a bright paint palette, creating passages

continued on page 9

EXHIBITIONS & EVENTS

continued from page 8

of beauty amid distorted and disturbing imagery. This exhibition is generously supported by Louise Bessire in memory of Henry E. Bessire. *Ahmed Alsoudani: Redacted* is also sponsored in honor of the Maine College of Art by: Patricia and Cyrus Hagge, Chris and Betsy Hunt, Horace and Alison Hildreth, and Candace Karu. FMI: www.portlandmuseum.org.



Ahmed Alsoudani (United States [born Iraq], 1975), Untitled, 2011, charcoal and acrylic on canvas, 63 x 61 1/2 inches. Courtesy of the artist and Haunch of Venison. © Ahmed Alsoudani. Photo courtesy of Haunch of Venison, New York

Winslow Homer's Civil War

*Exhibition at the Portland Museum of Art
On view September 7 – December 8, 2013*

In conjunction with the Maine Civil War Trail Project, a series of special displays at more than 20 museums and historical institutions around the state commemorating the sesquicentennial of the conflict, the Portland Museum of Art is presenting a focused selection of war-related wood engravings by Winslow Homer drawn from its permanent collection. As an artist-correspondent for the popular magazine *Harper's Weekly*, Homer made several trips to the Virginia front with Union troops. He used his first-hand experience and keen eye for social commentary to create images that address the nature of modern warfare and its impact on the home front. FMI: www.portlandmuseum.org.

The Bell of the H.M.S. Victoria

*Lecture at the Gouldsboro Historical Society
Monday, September 9, 7 p.m.*

Ben Walter, owner/innkeeper of Oceanside Meadows, Prospect Harbor, will tell us the tale of the H.M.S. Victoria's bell and how it came to be in Prospect Harbor, then of the diplomacy involved avoiding ill feelings with our Canadian neighbors in helping them commemorate a naval event. At the Old Town House Museum, 452 U.S. Route 1, Gouldsboro. FMI: (207) 963-5530.

"Maine Home Cooking" with Sandy Oliver

*Program at the Thomaston Historical Society
Tuesday, September 10, 7:30 p.m.*

Acclaimed food historian Sandy Oliver will give a program based on her book *Maine Home Cooking*. The Society is located at 80 Knox Street, Thomaston. FMI: (207) 354-2295 / www.thomastonhistoricalsociety.com.

John Haley and the Civil War

*Gallery Talk at the Saco Museum
Friday, September 13, 6 p.m.*

Join exhibition curator and Collections and Research Manager Camille Smalley for a gallery talk about *John Haley's Civil War*. Camille will discuss the exhibition as well as John Haley's life after the Civil War, including his tenure as the

Dyer Library's second librarian at the 308 Main Street location as well as Haley's instrumental role in developing the Civil War monument located in Saco's Eastman Park (intersection of Beach, North, and Main Streets). FMI: (207) 283-3861 / www.dyerlibrarysacomuseum.org.



Sandy Howe demonstrates spinning surrounded by Alfred-made spinning wheels.

Shaker Hill Apple Festival

*Event at the Alfred Shaker Museum
Saturday and Sunday, September 14 and 15,
10 a.m. to 4 p.m. both days*

Friends of the Alfred Shaker Museum (FASM) invites all to visit during Shaker Hill Apple Festival. The museum will be open, featuring Alfred Shaker-made spinning wheels. Other artifacts include a lovely linsey-woolsey coverlet with an indigo glaze made by the Alfred Shakers for their local doctor and the doorway to the former Shaker schoolhouse, which has been installed between the two rooms of the museum. The wall mural depicting the Alfred Shaker Community as it looked in 1880 is a must-see. In addition, Friends of the Alfred Shaker Museum will have demonstrations of Shaker-related crafts, a huge yard sale, wagon tours of the former Shaker Community, apple pie sales, and pony rides and games available for children. Light lunch items will be available in the back room of the museum by the gift shop, and hot dogs and hamburgers will be grilled outside the museum. Shaker Hill Apple Festival involves not only FASM activities, but also a wide variety of activities sponsored by the York County Shelter Programs, apple picking at Notre Dame Orchards, maintained by Giles Family Farm, and apple sales by the Brothers of Christian Instruction, all located on Shaker Hill. FMI: www.alfredshakermuseum.com.

Louise Helen Coburn's 157th Birthday

*Celebration at the Skowhegan History House
Saturday, September 14, 1 to 3 p.m.*

Come join the celebration, enjoy some cake, lemonade, and musical recordings from our 1892 Regina Music Box on the Riverside Lawns. Bring a lawn chair and sit awhile beside the majestic Kennebec River. Feel free to take a tour of the History House Museum & Research Center before or after the celebration. FMI: (207) 474-6632 / www.skowheganhistoryhouse.org.



Book Talk with June O'Donal
*Program at the Hiram Historical Society
Saturday, September 14,
1:30 p.m.*

June O'Donal, author of the historical fiction book series

The Fryeburg Chronicles, talks about writing her books to teach her home-schooled children local history. Hiram Historical Society programs are held at the Great Ossipee Museum, 20 Historical Ridge (off Schoolhouse Rd., off Rte. 117) in Hiram Village. Business meeting 1 p.m., program 1:30. Free and open to the public. Light refreshments. FMI: (207) 625-4762.

"Yarmouth Sports Rivalries in the Past"

*Lecture at the Yarmouth Historical Society
Monday, September 16, 7 p.m.*

Michael Hoffer, the sports editor of the *Forecaster* newspapers, will speak about the past triumphs and rivalries of Yarmouth sports teams, including Yarmouth High School and North Yarmouth Academy. This program will take place at the Yarmouth History Center, located at 118 East Elm Street in Yarmouth. FMI: (207) 846-6259 / www.yarmouthmehistory.org.

The Appalachian Trail in Maine

*Lecture and book signing at
Bethel Historical Society
Saturday, September 21, 1:30 p.m.*

David B. Field, retired University of Maine professor of Forest Resources, will present a program about the Appalachian Trail in Maine—as it is today and how it came to be. Author of *Along Maine's Appalachian Trail*, he has maintained six miles of the Appalachian Trail for 54 years. He also has served as an officer of the Maine Appalachian Trail Club and on the board of managers of the Appalachian Trail Conference. Following his talk, Field will be available to sign copies of his book. The lecture is supported by a grant from the Maine Humanities Council. The Bethel Historical Society is located at 10 Broad Street, Bethel. FMI: (207) 824-2908 / www.bethelhistorical.org.

John Haley's 19th Century

*Walking Tour of Saco
Hosted by the Saco Museum
Sunday, September 23 at 1:30 p.m. and
Sunday, October 13 at 1:30 p.m.*

After returning home from his service in the Civil War in 1865, John Haley resumed life as a civilian. In 1893, he became the Dyer Library's second librarian. Haley enjoyed walking the streets of Saco and documenting the city's buildings and inhabitants. Collections and Research Manager Camille Smalley will lead a walking tour from the Saco Museum to Rapid Ray's, across Main Street, and back to the Soldier Monument at Eastman Park, using Haley's detailed and sometimes critical notes. FMI: (207) 283-3861 / www.dyerlibrarysacomuseum.org.

The Jefferson Bandstand

*Program at the Jefferson Historical Society
Tuesday, September 24, 7 p.m.*

The old Jefferson bandstand, which now stands near the Town Office, was built around the time of the Jefferson Centennial in 1907 when a Harold Hill-type musician came to town and the Jefferson Band was organized. The bandstand was totally restored in the 1980s by the JHS

continued on page 10

EXHIBITIONS & EVENTS

continued from page 9

brought to its present site. Recent acquisitions of instruments and band uniforms will be displayed. At the Old Jefferson Town House, 7 Gardiner Road. FMI: (207) 549-5258.

Forever Young: Historic Photographs of Maine Children

Presentation presented by
the Skowhegan History House at
the Margaret Chase Smith Library Auditorium
Wednesday, September 25, 7 p.m.

A presentation of mid-19th- to early 20th-century photographic images of Maine children based on the extensive photograph collection at the Maine Historic Preservation Commission. Presenter: Earle Shettleworth, State Historian. The Margaret Chase Smith Library Auditorium is located at 54 Norridgewock Avenue. FMI: (207) 74-6632 / www.skowheganhistoryhouse.org.



Second Annual Lewiston-Auburn Mini Maker Faire

Festival at Museum L-A, Lewiston
Saturday, September 28, 10 a.m. to 4 p.m.

Featuring both established and emerging “makers,” the Lewiston-Auburn Mini Maker Faire is a family-friendly celebration featuring robots, DIY science and technology, alternative energy, bicycles, unique hand-made crafts, music and local food, and educational workshops and installations. Last September, Museum L-A presented Maine’s first nationally-licensed Mini Maker Faire, and more than 750 attendees enjoyed a full day of fun and discovery covering a wide range of topics including wind energy, robotics, calligraphy, and puppetry. This year, the Museum aims for 50 exhibitors, including the return of EepyBird, world-famous for its Coke and Mentos spectacular. FMI: makerfairelewis-tonauburn.com.

Annual Harvest Festival

Event at the Curran Homestead
Living History Farm and Museum

Saturday, September 28, 10 a.m. to 2 p.m.

A celebration of autumn on a rural Maine farm! Living-history demonstrations using antique and vintage equipment, cider-making, and firewood preparation are among the activities planned. Visitors will be treated to live music, horse-drawn hayrides, blacksmithing demonstrations, and baked goods fresh from the kitchen cook-stove, all amidst the scenic autumn beauty of the Homestead’s rural locale. Jitterbug/doodlebug pulling challenge at 1 p.m. The Curran Homestead Living History Farm and Museum is located at 372 Field’s Pond Road, Orrington.

FMI: contact museum director Bruce Bowden (BruceRBowden@hotmail.com), or visit www.curranhomestead.org.



2013 Portland Museum of Art Biennial: Piece Work

Exhibition at the Portland Museum of Art
On view October 3, 2013 -
January 5, 2014

The 2013 Portland Museum of Art Biennial: Piece Work is the eighth in an ongoing series of juried exhibitions showcasing new or recent work by living artists. Through a generous bequest by beloved Maine artist William Thon and his wife, Helen, the Biennial began in 1998 and has become a centerpiece of the PMA’s exhibition calendar for artists, audiences, and arts professionals in the state of Maine and beyond. The juror for the Biennial is Jessica May, Curator of Contemporary and Modern Art, Portland Museum of Art. The 2013 Portland Museum of Art Biennial: Piece Work is made possible by the William E. and Helen E. Thon Endowment Fund. FMI: www.portlandmuseum.org.

Heirloom Apples, Trees, and Conservation

Program sponsored by the Friendship Museum
Saturday, October 5, 6:30 p.m.

Talk by John Bunker from Palermo on Heirloom Apples, Trees and Conservation, Hahn Community Center, 31 Main St., Friendship. FMI: Liga Jahne, (207) 832-6646 / www.friendshipmuseum.org.

“Can You Name This?”

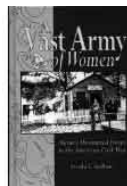
Program and Community Supper at
the Thomaston Historical Society
Sunday, October 6, 4 p.m.

A community supper with a program “Can You Name This?,” a collection of old photographs of town events we are trying to better identify. The Society is located at 80 Knox Street, Thomaston. FMI: (207) 354-2295 / www.thomastonhistorical-society.com.

“All for the Union”

Lecture at
the Hiram Historical Society
Saturday, October 12, 1:30 p.m.

Lyn Sudlow, author of *A Vast Army of Women: Maine’s Uncounted Forces in the American Civil War*, presents a program, “All for the Union,” on Maine women in the Civil War. Hiram Historical Society programs are held at the Great Ossipee Museum, 20 Historical Ridge (off Schoolhouse Rd., off Rte. 117) in Hiram Village. Business meeting 1 p.m., program 1:30. Free and open to the public. Light refreshments. FMI: (207) 625-4762.



Annual Stanley Russell Howe Lecture

Event at the Bethel Historical Society
Saturday, October 12, 1 p.m.

Dona Brown, Professor of History at the University of Vermont, will present a program on the emergence and impact of “auto tourism”

during the early decades of the 20th century. Dona Brown came to UVM in 1994 after earning her Ph.D. at the University of Massachusetts at Amherst. Her first book, *Inventing New England: Regional Tourism in the Nineteenth Century*, explored the significance of the tourist trade in creating an enduring image of New England. She has also published a number of articles on the history of tourism and regionalism, and is the editor of a collection of 19th-century tourist stories (*A Tourist’s New England: Travel Fiction, 1820-1920*). She teaches courses in United States cultural history, New England history, and Vermont history. Director of the Center for Research on Vermont from 2003 to 2006, she has recently completed a book about American back-to-the-land movements in the 20th century: *Back to the Land: The Enduring Dream of Self-Sufficiency in Modern America*. Most recently, she authored “The Landscape of Self-Sufficiency: New England Farms and the Back-to-the-Land Movement of the 1930s,” in *New England: A Landscape History*. The Bethel Historical Society is located at 10 Broad Street, Bethel. FMI: (207) 824-2908 / www.bethelhistorical.org.

“Maine Sea Coast Mission Over the Years”

Lecture at the Gouldsboro Historical Society
Saturday, October 16, 7 p.m.

C. Scott Planting, Executive Director of the Maine Sea Coast Mission, Bar Harbor, will talk to us about the “Maine Sea Coast Mission Over the Years.” Before Scott’s presentation, area historical societies will gather for a pot luck supper in the friendship hall and share brief reports of how their season went. At the West Bay Church, 88 Old Route One, Gouldsboro. FMI: (207) 963-5530.

Limerick Historical Society Cemetery Social

Event at Highland Cemetery,
Route 5, Limerick, Maine
Saturday, October 19, 2 p.m.

Do you think Halloween is the perfect season for ghostly historical encounters? Meet some of the residents of the Highland Cemetery as we visit different gravesites and hear what “they” have to say. Members of the Society will be taking on the roles of some of our distinguished predecessors, will be dressed in appropriate period clothing, and will be delighted to meet and greet visitors from near and far. Rain date: October 26. FMI: www.limerickhistorical.org.

“The Popham Colony’s Excavation”

Lecture at the Yarmouth History Center
Monday, October 21, 7 p.m.

Speaker John W. Bradford will describe how, in April 1606, England established two New World colonies: Jamestown in today’s Virginia and the Popham Colony’s Fort St. George at the mouth of Maine’s Kennebec River. The Popham colonists returned to England just 14 months after arrival. Using a journal compiled by colonist Robert Davies (first published in 1614) in 1994, archaeologist Jeffrey Phipps Brain opened a seven-week dig in which two timber-frame post holes

continued on page 11

Our members report on news, awards, and achievements from throughout the state.



Gould Academy students search for evidence of Dr. Moses Mason's "library."

BETHEL

Fourteen students from Gould Academy recently carried out an archaeological investigation on the **Bethel Historical Society's** grounds as they searched for evidence of Dr. Moses Mason's "library," a small structure that stood next to his 1813 residence from about 1837 to at least the 1860s. The students—13 seniors and one junior—were under the instruction of Savannah Sessions, a Gould teacher who has volunteered at BHS in the past; the dig itself was led and supervised by Norman Buttrick, a historic archaeologist, a longtime Society member, and seasonal resident of nearby Gilead. As the students learned, uncovering evidence of what was likely a one-story wood frame building used mainly as an office (and labeled as such on the 1858 map of Bethel Hill village) proved a challenge due to a shortage of artifacts (as Norm Buttrick pointed out, former house sites typically yield a greater number and variety of objects). Nevertheless, the excavation of eight test pits on the Mason lawn near Broad Street generated a number of items, including shards of pottery, bits of window glass, and a quantity of pipe stems. In addition, at least two of the pits contained medium-to-large sized stones

arranged to suggest that Dr. Mason's "library" was supported on a roughly-laid stone foundation. All of this evidence, plus detailed diagrams of the site as it was excavated, will be taken into consideration when the project report is completed. In the meantime, our thanks to Savannah Sessions, Norm Buttrick, and the Gould Academy students for carrying out this inquiry into a little-known chapter of life on Bethel Hill!

The **Bethel Historical Society's** Director Emeritus, Stanley R. Howe, received the **Maine Historical Society's** 2013 Neal W. Allen, Jr. History Award "in recognition of outstanding contributions in the field of Maine history and genealogy" at the organization's 191st annual meeting on June 8. Howe, who has written and lectured widely on many subjects relating to Maine history, has also taught Maine history at the **universities of Southern Maine and New England**, and served on graduate committees at Wesleyan and West Virginia universities. A member of the Maine Historical Society since 1965, he has served the Society as a trustee, chair of the Publications Committee, a member of the Editorial Board, and book reviewing editor of *Maine History* since 1988. After graduating from Gould Academy, he attended the University of Southern Maine and holds an M.A. from the University of Connecticut and a Ph.D. from the **University of Maine**. Very active in the Bethel community, he also volunteers for a number of non-profit organizations including the Bethel Historical Society.



Thatching begins.

BRISTOL

Colonial fishermen and early settlers to this region wove marsh grasses and native reeds into surprisingly sturdy and durable roofs to protect their homes from the sometimes harsh Maine coastal weather. On June 23-34, this nearly lost art was again plied at **Colonial Pemaquid State Historic Site**, where professional roof thatcher Colin McGhee installed a thatched roof on the top of a replica of a 1600s dwelling at the site. The dwelling project has so far been a two-year project of the Bureau of Parks and Lands and their partners, the Friends of Colonial Pemaquid. The structure is made of a timber frame with walls made of a mud and stick material known as "wattle and daub." The exterior of the building is clad with rough clapboards, and the new thatched

roof literally tops it all off. The thatching was done by hand by Scotland native Colin McGhee, whose work can be seen at www.thatching.com. For more information, contact Barry Masterson, park manager, at: (207) 677-2423.

GREAT CRANBERRY ISLAND

The Great Cranberry Island Historical Society has added an historic cabin, "Sammy Sandford's cabin" and upgraded their trail behind Cranberry House. This goes through wetlands over bog bridges to the pristine shore of the Western Way. A guided tour will be held in August. Also in August, on Friday the 16th, geology Professor Sheila Seaman will lead a hike and shows slides on the unique rock formations of Cranberry Island: 10:30 a.m. (hike) & 1:30 p.m. (slides). Finally, the exhibition "Art of the Cranberry Isles" is on view August 1 through 8. For other programs and events see www.Cranberryisles.com, click on Great Cranberry Island or www.GCIHS.org and look at the calendar of events.



"Bands on the Run" in Lewiston

LEWISTON

Museum L-A's second "Bands on the Run" doubled last year's participation of nearly 1,400 taking part in a half marathon, 5K, and children's fitness events on June 23. Spectators cheered as fourteen bands representing a variety of music genres kept the beat along the running course, which traversed historic sections of Lewiston and Auburn. Hundreds gathered at a park adjacent to

—continued on page 12

Exhibitions & Events

continued from page 10

with post moulds were found. Eleven digs were subsequently conducted with remarkable success. The Popham Colony's excavation demonstrates the colony's priorities, assortment of skills, and adjustment to its environment. This program will take place at the Yarmouth History Center, located at 118 East Elm Street in Yarmouth. FMI: (207) 846-6259 / www.yarmouthmehistory.org.

The Fire Tower on the Mountain

Program at the Jefferson Historical Society

Tuesday, October 22, 7 p.m.

Jefferson's Fire Tower stood on "The Mountain" for many years before it was flown by helicopter to an offshore Maine island. The fire tower was staffed in the summer and was one of a series of fire lookouts throughout the state. At the Old Jefferson Town House, 7 Gardiner Road. FMI: (207) 549-5258. •

continued from page 11

the Museum's future site for a finish-line festival featuring more music, food, children's activities, and local vendors.

NEW GLOUCESTER

The **Sabbathday Lake Shaker Village** Anniversary Campaign is well underway. The campaign, which runs through 2014, will cover the costs of a new modular vault addition, collections conservation work and a new restroom—the first major capital improvements at the library in 25 years. Friends of the Shakers' Weekend on August 10–11 will feature the library's collections in a series of presentations given by the Sabbathday Lake Shakers, librarian and archivist Chuck Rand, and former director Leonard L. Brooks. MAM members are invited to contact Sabbathday Lake for information about the project.

NORTHEAST HARBOR

In May, the **Northeast Harbor Library** was awarded a Davis Family Foundation Grant to purchase materials to properly preserve their archive collection of Fred L. Savage architectural drawings and blueprints. Fred L. Savage (1861–1924) was a renowned architect who designed hundreds of houses on Mount Desert Island, many of which are located in Northeast Harbor. Rehousing and preserving the collection of original materials is of utmost importance to the archives, due to its regular use and historical significance to the town. The grant money has been used to purchase three flat file cases and additional archival materials to flatten and rehouse the drawings and blueprints. In the process, the drawings are also being numbered and cataloged in the library's OPAC to enhance public accessibility.



The Tate House Museum annual plant sale

PORTLAND

This was a busy spring for the **Tate House Museum**, starting with the Annual Plant and Herb Sale. The garden committee organized one of the museum's most successful sales ever, including plant donations from members' gardens as well as heirloom plants from the Tate House Garden. This event provides an opportunity to connect with the community and to offer tours of

the house before the beginning of the museum's regular season on June 1st.

PRESQUE ISLE

Presque Isle Historical Society kicked off its 50th Anniversary with some new programs such as the Guided Walking Tour of Historic Fairmount Cemetery. The cemetery was established in 1864. The tour touches on the history of the cemetery, its Victorian influences, and the history of approximately 30 individuals of historic significance to Presque Isle. The tour is given April through October on the first Friday of each month beginning at 5:30 p.m.



Tour guide Kim Smith indicates to tour-goers the urn atop the grave marker as a Victorian symbol and the GAR star at its base signifying service in the Civil War and membership in the Grand Army of the Republic organization.

The 1875 **Vera Estey House Museum**, owned and operated by **Presque Isle Historical Society**, is now participating in the Blue Star Museums Program, making it one of more than 1,800 museums across America to offer free admission to active military personnel and their families this summer in collaboration with the National Endowment for the Arts, Blue Star Families, and the Department of Defense. The program runs from Memorial Day to Labor Day. Craig Green, President of the Board of Directors of Presque Isle Historical Society, says, "The Historical Society is honored to be able to show our support of our military through our participation in this program."

SKOWHEGAN

The **Margaret Chase Smith Library** is pleased to announce the winners of its seventeenth annual essay contest, which asked Maine high school seniors to write about the ways they would reform and improve education. The first-place prize of \$1,000 goes to Samantha Leiper of Noble High School in North Berwick; second place and \$500 to Brady Davis of Freeport High School; third place and \$250 to Mariah Damon of Gardiner High School. Five honorable mention prizes of \$50 were awarded to Katie Bosse of St. Dominic Academy in Auburn; Sarah Elizabeth Dean of Hall-Dale High School in Farmingdale; Sarah Finnemore of Skowhegan Area High School;



Samantha Leiper

Jacob Maxmin of Watershed School in Camden; and Brianna Woodward of South Portland High School.

The **Margaret Chase Smith Library** was also pleased to host the National Education for Women (NEW) program in early June. Organized by the Margaret Chase Smith Policy Center at the **University of Maine**, NEW Leadership is a six-day, non-partisan, training opportunity for women in college. Twenty-eight students representing a variety of backgrounds, majors, and institutions throughout Maine were joined by program staff and over a dozen female mentors from academia and politics. During the week, participants learned skills and developed networks necessary to become civic and political leaders. The program focused on the importance of engaging in public policy development, taking part in campaigns, and running for office. The training culminated with a visit to the State Legislature, followed by time at the Margaret Chase Smith Library. By learning about Senator Smith's legacy, it is hoped that the young women will continue the Maine tradition of strong female political leadership.



National Education for Women program at the Margaret Chase Smith Library.

The **Margaret Chase Smith Library's** 24th annual Maine Town Meeting drew its largest crowd ever, with 79 guests in attendance. The featured speaker was former Congressman Tom Allen, who spoke about his book, *Dangerous*

—continued on page 13

continued from page 12



Tom Allen and Cindy Michaels

Convictions: What's Really Wrong with the U.S. Congress. Based upon his dozen years in the House of Representatives, Allen maintains that it is not a lack of civility or bipartisanship that has made Washington so dysfunctional, but rather two historic and clashing fundamental world-views, individualism and community, which are currently governed more by conviction than

compromise. The second speaker, former WVII news director and anchor Cindy Michaels, talked about one of the contributors to political dysfunction—the media. She described how the pressures of time, commerce, and political agendas shape the news as much as report it. Both talks were followed by lively discussions of what can be done to improve political culture and rein in sensationalist journalism.

Skowhegan History House Museum & Research Center has been awarded a \$1,200 Historic Preservation matching grant through the Eunice Farnsworth-Ruth Heald Craig Chapter NSDAR. The grant will provide funding for the purchase of archival supplies to protect and preserve bound books and ledgers that have fragile leather bindings. Staff and volunteers will focus on completing the project during 2013 season. Louise Helen Coburn, founder of History House, was also the founder and first Chapter Regent of the Eunice Farnsworth Chapter DAR.

Also at the **Skowhegan History House Museum & Research Center**, Mr. Benjamin Doty of East Madison has been hired as a part-time

Museum Assistant. Mr. Doty is a 2007 graduate of Skowhegan Area High School and in 2011 graduated summa cum laude from the **University of Maine** with a BA in English/Political Science. He also has earned a Master of Arts with distinction from Birkbeck, University of London in 2012 focusing on Modern and Contemporary Literature. Researching, assembling, and presenting information, especially historical information, is something Ben enjoys. History, policy, writing, and politics are the subject areas in which he has the most experience, as exhibited by his candidacy for the Maine House of Representatives in 2010. While in elementary school in Cornville, Ben co-authored a booklet on several of the holdings at the History House and worked on projects associated with the History House while in the Skowhegan Middle School. Mr. Doty currently works at the **Margaret Chase Smith Library** as an Archives Volunteer and as an Archive Assistant Intern at the **Kennebec Historical Society** in Augusta. Mr. Doty will be providing patron tours of the museum and research center, assisting researchers, working with volunteers, and conducting archival projects, including cataloging the hundreds of photographs in the collection. •



Providing Software and Services to Ensure Quality Preservation and Accessible Historical Collections

DIGITIZE AND STRATEGIZE



As historians and technologists, HistoryIT professionals work with archives, museums, businesses, and community organizations to digitize and manage their historical resources, and strategize technology solutions that further the cause of accessible history.

MANAGE ARCHIVAL RESOURCES



Our web-delivered archive management software helps you share and organize your collections. ArchivesTree™ offers archival tools and rich functionality in an easy to use, intuitive format. MAM members receive \$100 off!

Based in Portland. Serving New England.

HistoryIT is an information technology firm, founded and managed by professional historians and technologists, and specializing in the review, preservation, digitization, presentation, and electronic management of historical collections.

WWW.HISTORYIT.COM

WWW.ARCHIVESTREE.COM

A Business Member of MAM
We're proud to Print, Mail and Support the MAM Newsletter!

Direct mail is the most effective, reliable and least intrusive means of getting your message to members • donors • customers!
...We can help!

You can have peace of mind letting us take care of the design, printing and mailing...so you can take care of your business.

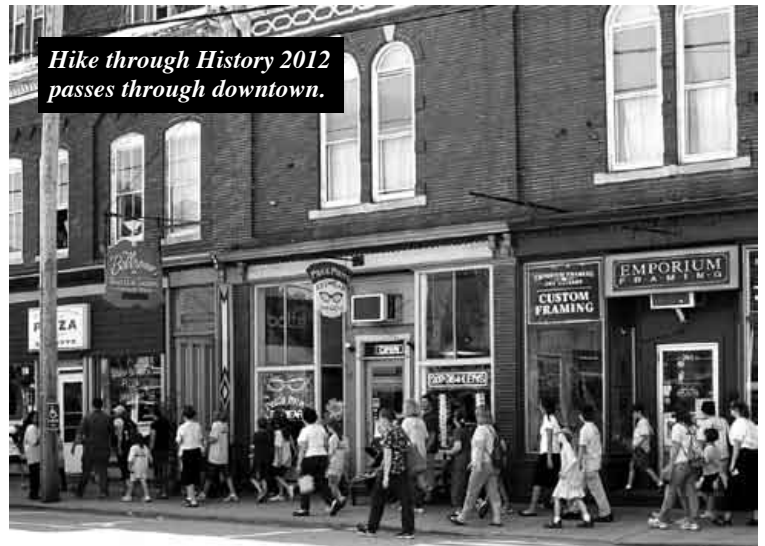
BANGOR LETTER SHOP & COLOR COPY CENTER

Penobscot Plaza • 99 Washington Street • Bangor, ME 04401

TEL (207)945-9311 • FAX (207)942-9914

info@bangorlettershop.com

Some students take a bus to a far-away museum to learn history. But the 500 students of South Berwick just hike out the door of their school. Aided by the resources of the Old Berwick Historical Society (OBHS), they follow their imagination to discoveries in their own home town.



Old Berwick Historical Society Pioneers School/Museum Collaboration

By Wendy Pirsig

Located in the heart of their 19th-century village, which was also recently listed on the National Register of Historic Places, South Berwick Central School is steps away from historic sites in all directions. The coming school year marks the 20th anniversary of a history-education collaboration between the OBHS, owner of the Counting House Museum, and the school district, MSAD 35. Their annual Hike through History takes place each May.

“We think the program is unique in New England,” said Nina Maurer, OBHS project coordinator for this year’s Hike. “We are proud of the hard-won collaboration between schools, two museums, 42 teachers, a phalanx of volunteers, and presenters ranging from a mule team driver to a river boatman.”

The program each year is put on with minimal cost. Small donations from the parent-teacher organization and local businesses occasionally cover stipends for a few special presenters. At each stop on the Hike through History, OBHS has researched true adventures of local citizens—from the nearly obscure lives of 17th-

century colonists and Native Americans, to the celebrated stories of author Sarah Orne Jewett, whose house, a National Historic Landmark, is owned by Historic New England, which partners with the Hike. Throughout the Hike are stories associated with houses and sites around town—people and events that were almost lost until OBHS volunteers dug into their archives to reveal them. For South Berwick residents young and old, the process is one of discovery and awakening to the value of their walkable village.

In addition to the elementary students, almost 200 older students—eighth graders from Marshwood Middle School working on a community service requirement—access the material and spend several weeks developing costumes, presentations, games and activities for the elementary pupils each year. As the younger children walk to each site on the Hike, they meet the eighth grade students who are transformed into local residents from the past. In 2013 the Hike theme was “Journeys,” one of three rotating themes for the three-year elementary grades. The eighth graders por-

trayed characters like William Furness, a South Berwick sea captain whose ship was attacked by pirates off Portugal in 1793; Eliza Barker, a teenager who arrived by river boat to lead the church choir; and Benjamin Davis, a young South Berwick soldier who went off to fight in the Civil War.

Children helped build an Indian bark canoe where natives paddled 300 years ago. They welcomed a national celebrity at the stage-coach tavern where General Lafayette stopped on his visit to Maine in 1825. And they cared for a horse at the house of Sarah Orne Jewett, where the author learned to ride as a child in the 1850s. In all, children met dozens of characters while visiting 18 sites where townspeople actually worked and lived. In addition to the “Journeys” theme, Hike programs are also written for “Childhood” and “Trades” themes. The three themes correspond to the three years children spend at the elementary school, and all three programs visit different parts of town.

“The eighth grade interpreters do a fantastic job, first conducting their own historical

—continued on page 15



Indian camp stop on Hike through History



Students at the Cummings Mansion, a private home



Students at the Counting House Museum



Students portray General Lafayette’s 1825 visit

Old Berwick Historical Society, *continued from page 14*

research, and then communicating what they learn to a younger audience,” said Nicole St. Pierre, the historical society’s project curriculum coordinator.

Besides spreading enjoyment and understanding of history, the project connects elementary students with their local museum. Prior to the Hike each year, the third graders now prepare for the event by walking to the historical society’s Counting House Museum to spend a morning with a special program tailored to that year’s theme and using objects from the collection. In the “Childhood” year, for example, the museum’s meeting room was transformed into a schoolhouse, using slates, inkwells and lessons actually used by third graders in South Berwick during the 1800s. In the Trades year, children see objects owned by local tradesmen, and practice bartering instead of using currency. As a result of the third grade visits, every elementary pupil now spends a morning at the museum as part of their education, exploring the past with hands-on materials and a curriculum designed just for them. Following their visit, the third graders return to school and talk to the other classes about what they have learned, helping the younger children prepare for the Hike through History.

In addition to the students and teachers, many parents and grandparents accompany children on the Hike through History each year. Property owners enjoy sharing lore associated with their homes. This year, for instance, local resident Brian McNulty welcomed students into his residence, the mansion built by William Cummings, the owner of the local shoe factory. Students saw an early telephone that was used there in the early 20th century and examined an antique car similar to the Franklin Roadster in the historical society’s photo of Cummings about 1906.

After almost two decades of casual collaboration, a three-year planning project has now consolidated the Hike’s best features so that it can be continued indefinitely. This round of planning, funded by one-time grants from the Maine Community Foundation, New Hampshire Charitable Foundation, Marshwood Education Foundation, and the Davis Family Foundation, has placed the historical material on a Hike through History website, www.hikethroughhistory.org, where stories can be picked up and brought to life each year, along with maps, props and resource guides. Now woven into the curriculum, the Hike through History has a solid place in the future of this community. •



Sixth graders with Molly the Trolley in 2012

Presque Isle Historical Society is “Steering Students to Local History”

by Kimberly R. Smith

In October 2011, Presque Isle Historical Society (PIHS) purchased a 1985 trolley bus from Maine State Surplus Auctions with the intent of using the trolley as a unique means to provide city-wide narrated historical tours. These tours now consist of Narrated City-Wide Historic Tours, Fall Foliage Tours, private charters and more.

Reaching young people has become an important focus for PIHS for many reasons. Attracting younger members is key to sustainability. Also, research shows that engaging youth in local history builds a greater sense of community pride. This is of major importance to PIHS right now. Presque Isle is the largest city in Aroostook County, the northernmost and largest county in Maine. Since 1980, the County has experienced a 22% population loss, and the City of Presque Isle a 14% population loss. It is hoped that, by building community pride and by showing the important role Presque Isle has played in both U.S. and international history, young people who leave to complete their education will return to the area to work and raise their families.

School Administrative District (SAD) #1, which serves Presque Isle, has six sixth-grade classrooms with approximately 150 students. Sixth-grade curriculum includes U.S. and international history events. Although Presque Isle is rural, remote, and relatively small, it has amazing ties to world events. Sixth-grade teachers were contacted with the goal of providing a city-wide historic tour using Molly the Trolley to at least one classroom. After meeting with the six teachers, it was determined that all six classrooms would participate. PIHS also provides the teachers with a hand-out for follow-up “talking points,” for which they can provide additional learning activities and historical context based on the sites visited during the tour. In June of 2012, the first “Steering Students to Local History” tour aboard Molly the Trolley” program began.

The tour has already had an impact. Students who participated in the sixth-grade tour have returned to take other local historical tours, bringing their families with them. These tours include the Guided Walking Tour of Historical Downtown Presque Isle, Haunted Lantern Tours of Historic Downtown, and Guided Tour of the 1875 Vera Estey House Museum. In addition, since taking this tour, students have volunteered their time for other historical society events and tours. The second year of this program was just completed with amazing success, and plans for next year are already underway.

Earlier this year, this program was a national finalist for the Public Programming Merit Award from the American Association for State and Local History. This program has been a win-win situation for the Society. The mission of promoting local history is fulfilled, young people see their community with new eyes, the trolley full of children provides excellent visibility for the organization, and the Society learns from the experience as well. Kim Smith, tour guide for the venture, says, “Reading the thank you notes from the children is very rewarding and entertaining. It is also very informative to see what new information each child has walked away with.” •



Abbe Museum Named Maine's First Smithsonian Affiliate

by Johanna Blackman

The Abbe Museum in Bar Harbor, Maine has been accepted as a Smithsonian Affiliate. This affiliation establishes a long-term partnership between the museum and the Smithsonian Institution. Smithsonian Affiliations, established in 1996, is a national outreach program that develops collaborative partnerships with museums and educational and cultural organizations to share Smithsonian Institution resources with citizens in their own communities. The program works with Affiliates to enrich communities with Smithsonian scholars, public programs, and professional development opportunities. Affiliate partner organizations demonstrate excellence in their work and commitment to the Smithsonian emphasis on heritage, preservation, and education. There are currently 179 Smithsonian Affiliates in 42 states, Puerto Rico, and Panama. The Abbe Museum is Maine's first affiliate.

"Becoming a Smithsonian Affiliate will support exciting collaborations between our organizations while dramatically expanding the Abbe Museum's visibility in the marketplace and in Maine's cultural community," said Abbe CEO Cinnamon Catlin-Legutko. "Collaborative projects are key to the Abbe's strategic direction. The Smithsonian is an incredible institution with tremendous scope in reach and resources. We are thrilled to share those resources with our community and members."

The partnership will provide the Abbe Museum access to the Smithsonian Institution's many resources, including its 136-million-object collections, scholarships and educational opportunities for staff, traveling exhibits, and membership benefits. Additionally, the Abbe and the Smithsonian will begin to pursue collaborations with one another, spreading the work of both cultural institutions.

"The Abbe Museum," noted Harold A. Closter, director of Smithsonian Affiliations, "is well-recognized for its outstanding collections, first-class exhibits, professional staff, and commitment to education. With a mission that so thoroughly matches the work of the Smithsonian, we are honored to welcome the Abbe Museum into the family of Smithsonian Affiliates and look forward to working with this impressive organization to help preserve the rich heritage of Maine and share the inspiring stories of its people."

Collaboration with the Smithsonian is something in which the Abbe Museum already has experience. When Abbe's downtown location opened, the museum borrowed three collection items for the exhibit *Four Mollys: Women of the Dawn*, guest curated by Bunny McBride. The Smithsonian traveling exhibit *IndiVisible: African-Native American Lives in the Americas* is currently on display at the

Abbe, where it will remain through August 4. The exhibit comes to the Abbe through the Smithsonian Institution Traveling Exhibition Service (SITES), and explores the intersection of American Indian and African American cultures. The Abbe has long enjoyed a relationship with the Smithsonian's National Museum of the American Indian (NMAI), particularly working together in the development of educational programming.

Additionally, a current Abbe Board Member, member of the Passamaquoddy tribe, and renowned Native artist, David Moses Bridges, has worked extensively with the Smithsonian Institution as a researcher, consultant, and educator. "I was very excited to learn of our relationship with the Smithsonian," says Moses Bridges. "I have always been impressed by the Smithsonian's commitment to include Native people as the caretakers and interpreters of the collections they oversee. By recognizing the family connection between objects and communities, they have set a new standard of museum relationship with indigenous people. The Affiliations program allows the Abbe Museum and its visitors access to the greatest collection of Indigenous art in the world. Anyone who has stepped inside the Smithsonian will understand that the Abbe Museum's new affiliation with the Smithsonian is surely something to be excited about." •

Maine Historical Society Partners on Week of *Boxer* & *Enterprise* Anniversary Events

by Larissa Vigue Picard

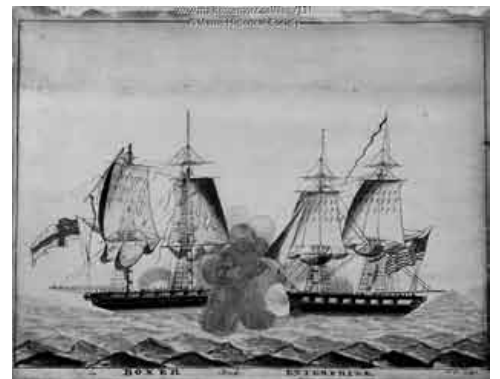
Maine Historical Society (MHS), along with Maine Military Historical Society, Greater Portland Landmarks, and the City of Portland's Eastern Cemetery, is hosting a series of events September 3 through 7 commemorating the 200th anniversary of the battle of the *HMS Boxer* and the *USS Enterprise* off Pemaquid Point during the War of 1812.

The following events will take place in MHS's Shettleworth Lecture Hall, 489 Congress Street, Portland:

- **Tuesday, September 3, noon to 1 p.m.:** *The Navy's Role in the War of 1812*. This double-header book talk features authors and

friends George Daughan (*1812: The Navy's War*) and Vice Admiral (Ret.) George Emery (*In Their Own Words: The Navy Fights the War of 1812*) discussing their recent publications. Both books will be on sale in the MHS museum store, and a book signing will follow the talk. Free to the public.

George Daughan is also the author of *If By Sea* (2008). He holds a Ph.D. in American History and Government from Harvard University, was a professor at Connecticut College, and taught at the Air Force Academy. **George Emery**, a native of Sanford, Maine, is a retired Vice Admiral with the US Navy. Prior to retirement,



Boxer and Enterprise by James Osborne, 1831

—continued on page 17

SEEN & HEARD



↑ Paula Work of the Maine State Museum and Sheri Leahan of Norlands at a recent MAM workshop at the L.C. Bates Museum in Hinckley.

↓ Ron Harvey of Tuckerbrook Conservation was a presenter at a recent MAM workshop at the L.C. Bates Museum in Hinckley.



↓ This spring, MAM offered eight gatherings and workshops from Portland to Caribou. Here, participants attend a Collections Care workshop at the L.C. Bates Museum in Hinckley.



↑ Craig Green, president of Presque Isle Historical Society, speaks to a group of interested citizens in the fire-damaged interior of the historic Maysville Grange, which is being renovated starting this summer to become a small museum dedicated to the Aroostook War, the movers and shakers of Maysville, the two granges that once served Presque Isle, and the 21 one-room schoolhouses that once served the community.



Maine Historical Society, continued from page 16

he was appointed 24th Commander of the Submarine Force US Atlantic Fleet, and Commander of the Submarine Allied Command Atlantic by President Clinton in August 1993. He is a life trustee of the USS Constitution Museum and was the recipient of the Museum's 2011 "Old Ironsides" Exemplary Service Award.

- **Wednesday, September 4, 6 to 8 p.m.: War of 1812 Historian's Roundtable.** Four historian-authors discuss the causes and effects of the Battle of the *Boxer* and *Enterprise* within the context of the War of 1812. David Hanna (*Knights of the Sea*) moderates a panel that includes George Emery (*In Their Own Words*), James Nelson (*George Washington's Secret Navy*), and Joshua M. Smith (*Battle for the Bay: The*

Naval War of 1812). The panelists' books will be on sale in the museum store and a book signing will follow the talk. Free to the public.

- **Friday, September 6, 5 to 7 p.m.: First Friday Art Walk/Boxer & Enterprise Exhibit Opening.** Maine Historical Society Research Librarian Jamie Kingman Rice curates this exhibit of documents and objects related to the battle and the funeral procession that followed. The exhibit will remain up through October 25. During First Friday, exhibit admission is waived. Otherwise, admission to the exhibit is included in the cost of the main gallery exhibit (currently *This Rebellion: Maine and the Civil War*).

Other events during the week include an invitation-only graveside commemoration at Eastern Cemetery on September 5, followed by a private reception at MHS. Members of the public

are welcome to observe the graveside commemoration from Mountfort Street, but are asked to be respectful of the historic cemetery by remaining outside of the fenced area or along the path. On Saturday, September 7, the Portland Observatory will maintain regular summer hours (10 a.m.-5 p.m.), with an opportunity to view Portland Harbor as Captain Lemuel Moody did on the fateful day in 1813 when the USS *Enterprise* towed her prize, the HMS *Boxer*, into port. Observatory Sunset Tours will be offered on the anniversary itself, Thursday, September 5, from 5 to 8 p.m.

**For more information
on all these events,
please visit
www.mainehistory.org/programs.**



“Right Buyer” Sought, *continued from page 1*

an annual fundraising event that benefited both non-profits financially and historically, raising awareness of this hidden gemstone. We quickly fell in love with the property and its historical value.

Stories have been written here, and memories made. Tucked back in the forest, on the shores of the Rapid River, and accessible only by unforgiving dirt roads or canoe and portage, Forest Lodge holds a certain magic. Louise Dickinson Rich felt it and knew it, which is probably why she chose that place to write *We Took to The Woods* and the other books in that series, along with many young adult fiction novels. The grounds are beautiful and include the Summer House, the Winter House, a fly-fishing shop, and the current owner’s lodge. Fly-fishing groups come to spend time there in spring and early summer, but most times of the year it is just the handful of people who keep the property in great shape, lovingly preserving the buildings as they were when Louise lived and wrote there.



Fireplace in the Summer House.

Through the Upton Historical Society’s relationship with the Friends of Forest Lodge, we have worked together to continue the conservation of this estate. We believe its historical significance is of utmost value to our town, the people in it, the old-timers who remember Louise and her husband, her children (some of whom still live in the area), and anyone who has read and loved her books.

In the past two years, we have held several tours of Forest Lodge, and the results are always the same: a long drive filled with stories, a wonderful tour by a charming owner, delicious food, and a quiet, thought-filled ride home. Places like this are our history. The memories there, the stories made and heard, the pastimes given from one generation to the next: those are where history is made and kept alive.

Unfortunately, the owner of Forest Lodge needs to sell at least part of this property. There exist a myriad of reasons for this situation, but the fact is that he alone can no longer maintain and own the estate. We, as a society and individually, are devastated that this is the case. There is no better man for the job; however, he is working carefully to sell the property to someone who will maintain its historical value and significance and continue to allow public access to the site.

This has been no easy task, though. The owner has had several offers on the property, but all have either wanted the land for personal use only or have fallen through with the financial commitment. Our town and our state are in jeopardy of losing a place that is important on a personal, local, and historical level. Despite the advocacy of the Upton Historical



The Winter House

Society and the Friends of Forest Lodge, the “right buyer” has not yet been found for this magical place. These buildings and grounds are worthy of preserving. The right buyer is someone who sees and understands their significance and beauty, as well as has the finances to purchase the historic homes. We need and seek someone who is willing to work to protect and maintain the property as it is, for the enjoyment of future generations—so that they may hold a piece of history in their hearts, as we do now. •

Inquiries, contact Aldro French: info@rapidriverflyfishing.com / (207) 650-3890. •

idée clic
+15 years
www.ideeclic.com

Digital Collections
Exhibitions Kiosks
Apps Multimedia
Design Games

uOttawa
THE VIRTUAL HISTORIAN™

CANADIAN WAR MUSEUM
MUSÉE CANADIEN DE LA GUERRE

SPECIAL THEMES OBJECTS AND PHOTOGRAPHS TEACHER RESOURCES NAVAL 100

Saskatchewan ARCHIVES Board

MAINE ARCHIVES & MUSEUMS

Be a part of Maine Archives & Museums!

Maine Archives & Museums (MAM) is the only professional association representing museums, archives, historical societies, and other collecting institutions in the state of Maine. Our purpose is to develop and foster a network of citizens and institutions in Maine who identify, collect, interpret, and/or provide access to materials relating to history, living collections, and culture.

Our vital services to Maine's cultural community include:

- Quarterly newsletter, in print and on-line
- Annual Conference
- Annual professional development workshops through the state
- Listings on our website
- Valuable member discounts on archival products at a variety of vendors
- Research and advocacy

Our members are Maine's collecting institutions (museums, libraries, historical societies, archives) as well as students, volunteers, paid and unpaid professionals, other cultural organizations, affiliated businesses, and the inter-

ested public. The support and participation of our members enable MAM to provide ever-expanding services to Maine's community of collecting institutions. By working together, we strengthen our collective resources and realize our shared mission.

Membership Categories and Dues

All members receive:

- Quarterly newsletter sent by mail
- Reduced rate for MAM conferences & workshops
- Member rate for ads in MAM's newsletter
- Discounts at Gaylord, Brodart, and University Products (e-mail MAM for information)
- Free event and job listings in MAM's newsletter and on MAM's website
- Regular e-mail updates from MAM

INSTITUTIONAL MEMBERSHIPS

Annual budget \$15,000 or less	\$25
Annual budget \$15,001 – \$50,000	\$40
Annual budget \$50,001 – \$100,000	\$50
Annual budget \$100,001 – \$500,000	\$75
Annual budget over \$500,000	\$150

Additional benefits for Institutional members:

- Member rate for *all* staff and volunteers to attend MAM conferences and workshops
- One free listing on "Find a Museum/Archive" feature on MAM's website
- E-mail updates from MAM delivered directly to up to four institutional e-mail addresses

BUSINESS MEMBERSHIPS

Consultant (single-member firm)	\$25
Partnership (two-member firm)	\$40
Corporate (multiple employees)	\$75

Additional benefits for Business members:

- Member rate for *all* staff to attend MAM conferences and workshops
- One highlighted listing on "Service Provider" feature on MAM's website
- E-mail updates from MAM delivered directly to up to four company e-mail addresses

INDIVIDUAL MEMBERSHIPS

Basic/Student*	\$25
Patron	\$75
Benefactor	\$150

Additional benefits for Individual members:

- Member rate to attend MAM conferences and workshops (one reduced rate with Basic membership, unlimited for Patron and Benefactor)

Member Information

Membership Type (See Membership Categories & Dues section; please check one):

- Institutional (for non-profit, collecting organizations)
 Business (for commercial or for-profit businesses that support the field)*
 Individual (for individuals **not** representing a non-profit, collecting organization)

Check one: New member Renewing member

Which membership is right for me? MAM encourages all organizations to become Institutional members because it provides benefits for the organization as well as staff and volunteers; dues are based on the organization's annual operating budget. MAM welcomes individual memberships for those who wish to join as an individual in addition to their organization's membership or for those unaffiliated with an institution and not serving as paid consultants.

Contact Name _____ Contact E-mail _____

For Institutional and Corporate Members

You may provide e-mail address for up to three staff/volunteers (in addition to the contact listed above) to receive on-line communications directly from MAM.

Institution/Business/School (NOTE: all student membership applications must be accompanied by a copy of a valid Student I.D.) _____

Mailing Address _____

City/Town, State, Zip _____

(_____) _____
 Contact Phone _____ Website _____

Membership Category: _____ Dues enclosed \$ _____

Example categories: Institutional under 15K, Corporate, Patron (see Membership Categories & Dues section)

Please make your check payable to Maine Archives & Museums and mail with this form to MAM, PO Box 46, Cumberland Center, ME 04021, or register on-line and pay with a credit card at www.mainemuseums.org.

Business Members: Please select up to three categories for the "Service Provider" feature on our website.

- | | | |
|---|---|---|
| <input type="checkbox"/> General Museum Services | <input type="checkbox"/> Appraisal Services / Assessment of Collections | <input type="checkbox"/> Conservation, Storage & Climate Control Supplier |
| <input type="checkbox"/> Historical Research | <input type="checkbox"/> Architectural Design/Construction Consultants | <input type="checkbox"/> Conservation/Preservation Services |
| <input type="checkbox"/> Public/Educational Programs | <input type="checkbox"/> Human Resources/Pensions/Retirement | <input type="checkbox"/> Exhibit Design, Fabrication & Resources |
| <input type="checkbox"/> Marketing and Public Relations | | <input type="checkbox"/> Fundraising/Development Consulting |
| <input type="checkbox"/> Digital Services/Archiving | | |
| <input type="checkbox"/> Professional Development | | |
| <input type="checkbox"/> Printing | | |

Describe your business: _____

Questions?

info@mainemuseums.org
 (207) 400-6965

"Find a Museum/Archive" Information for Institutional Members

MAM's website features the Find a Museum/Archive search feature for the general public. Please provide information that will be accessible and useful for all.

Name of Institution _____

Physical address for the general public _____

(_____) _____

Phone number for the general public _____

E-mail address for the general public _____

What's your specialty? Check up to 10 boxes below for your listing in the Find a Museum/Archive search feature on www.mainemuseums.org.

- | | |
|---|---|
| <input type="checkbox"/> Acadian Culture | <input type="checkbox"/> Literary |
| <input type="checkbox"/> American Indian | <input type="checkbox"/> Living History |
| <input type="checkbox"/> Aquarium | <input type="checkbox"/> Local History |
| <input type="checkbox"/> Archaeology | <input type="checkbox"/> Logging or Lumber |
| <input type="checkbox"/> Archive | <input type="checkbox"/> Maine History |
| <input type="checkbox"/> Art | <input type="checkbox"/> Maritime |
| <input type="checkbox"/> Children's | <input type="checkbox"/> Military |
| <input type="checkbox"/> Civil War | <input type="checkbox"/> Museum |
| <input type="checkbox"/> College & University | <input type="checkbox"/> National Register of Historic Places |
| <input type="checkbox"/> Ethnic History | <input type="checkbox"/> Natural History |
| <input type="checkbox"/> Fire/Police | <input type="checkbox"/> Recreation |
| <input type="checkbox"/> Forestry | <input type="checkbox"/> Reenactments |
| <input type="checkbox"/> Forts | <input type="checkbox"/> Religion |
| <input type="checkbox"/> Genealogy | <input type="checkbox"/> Science & Technology |
| <input type="checkbox"/> Historic House | <input type="checkbox"/> Shakers |
| <input type="checkbox"/> Historic Site | <input type="checkbox"/> Sports |
| <input type="checkbox"/> Historical Society | <input type="checkbox"/> Transportation |
| <input type="checkbox"/> Industrial History | <input type="checkbox"/> Library |
| <input type="checkbox"/> Library | <input type="checkbox"/> Miscellaneous |
| <input type="checkbox"/> Lighthouse | |

Describe your institution: _____



The Association of
Maine Archives and Museums
P.O. Box 46
Cumberland Center, ME 04021

NONPROFIT ORG.
U.S. POSTAGE
PAID
PERMIT 46
BANGOR ME

CHANGE SERVICE REQUESTED

The Little Town that Could...and Did! 20 Years Later

by Nancy Noble

In the early 1990s, a group of hardy souls from a small island in Casco Bay traveled to Augusta to the Maine State Legislature to plead their case—they wanted to secede from the City of Portland. Why? Basically, for three reasons: soaring taxes, a lack of services, and little say in local matters; that is, a lack of local control over their island community and way of life. The result was H.P. 1634: “An act to allow the separation of certain islands in Casco Bay from the City of Portland.”

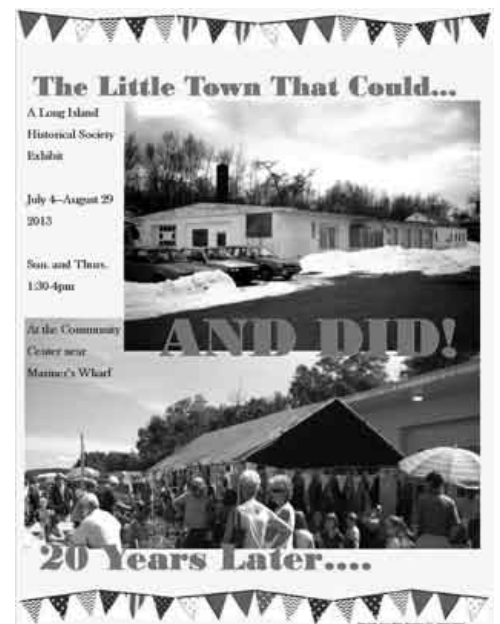
That was only part of the process—next came negotiations with the City of Portland, which was, understandably, reluctant to let them go. From there it came to a referendum, and the vote was positive towards secession. The last leg of the journey was creating a town from scratch with no money. But by July 1, 1993, the Town of Long Island came into existence.

This summer, the Long Island Historical Society celebrates the 20th anniversary of becoming a town with their exhibit: *The Little Town that Could...and Did! 20 Years Later*. What as the town accomplished in the last two decades? The direct effect has been the creation of a town, which for many years had been “Maine’s newest town” (in recent years Frye Island and Chebeague Island have claimed the title). This includes an annual town meeting to parse out the functions and budget for this small town, creation of town positions and committees and selectmen providing town governance, and an eventual significant lowering of taxes. On a different level, there has been even more unification towards becoming one

town, rather than a group of neighborhoods. Visual changes include over 75 new houses being built and seasonal cottages becoming year-round, a library/school addition, a new wharf, a community garden, and a high-speed rescue boat. Other changes can be found in the church and faith communities, social and recreational and community organizations, the school, businesses, and general infrastructure, much of which is showcased in this exhibit. The population has grown, and there has been an increase in social services. Mostly there has been an outpouring of community excitement in the form of volunteerism and support.

Secession caused some division in the community, and while a few left because of it, most stayed on to make it work. While most would agree that it was a good thing, it is not a given by everyone. One islander has cautioned some Peaks Islanders desiring to secede from Portland by telling them that it’s not always a good thing to be accountable to your neighbors—and that working with the more anonymous City of Portland can be a benefit, rather than a negative. But for the most part, Long Islanders, particularly those who came after secession, have benefited from the work done 20 years ago.

The final panel in the exhibit is an overview by Mark Greene, the chair of the Town of Long Island Research Committee (TOLIRC), which was formed at a meeting of the Long Island Civic Association on July 28, 1991. Twenty years later, Mark reveals, “In my most optimistic projection, I could not have envisioned



how well it has gone.” His biggest worry was if folks would volunteer and become involved. Fortunately his concern was unfounded, and the Town of Long Island has thrived, grown, and shown the world that it is possible to secede...and flourish!

The Long Island Historical Society summer 2013 exhibit, The Little Town that Could...and Did! 20 Years Later, is open July 4 through August 29, Sunday and Thursday afternoons from 1:30 to 4 p.m. It is located at the Community Center near Mariner’s Wharf.

For more information on the secession of Long Island from Portland, various secession collections, including one donated by Mark Greene, can be researched at the Long Island Historical Society.